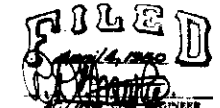


SHEET NO 1
PLAN NO 1891
LUGO AVENUE SEWER
 Between
MARSHALL BOULEVARD AND 34TH STREET
 in the
CITY OF SAN BERNARDINO
CALIFORNIA
 MARCH 1950
 R. D. FORSYTHE
 Acting City Engineer

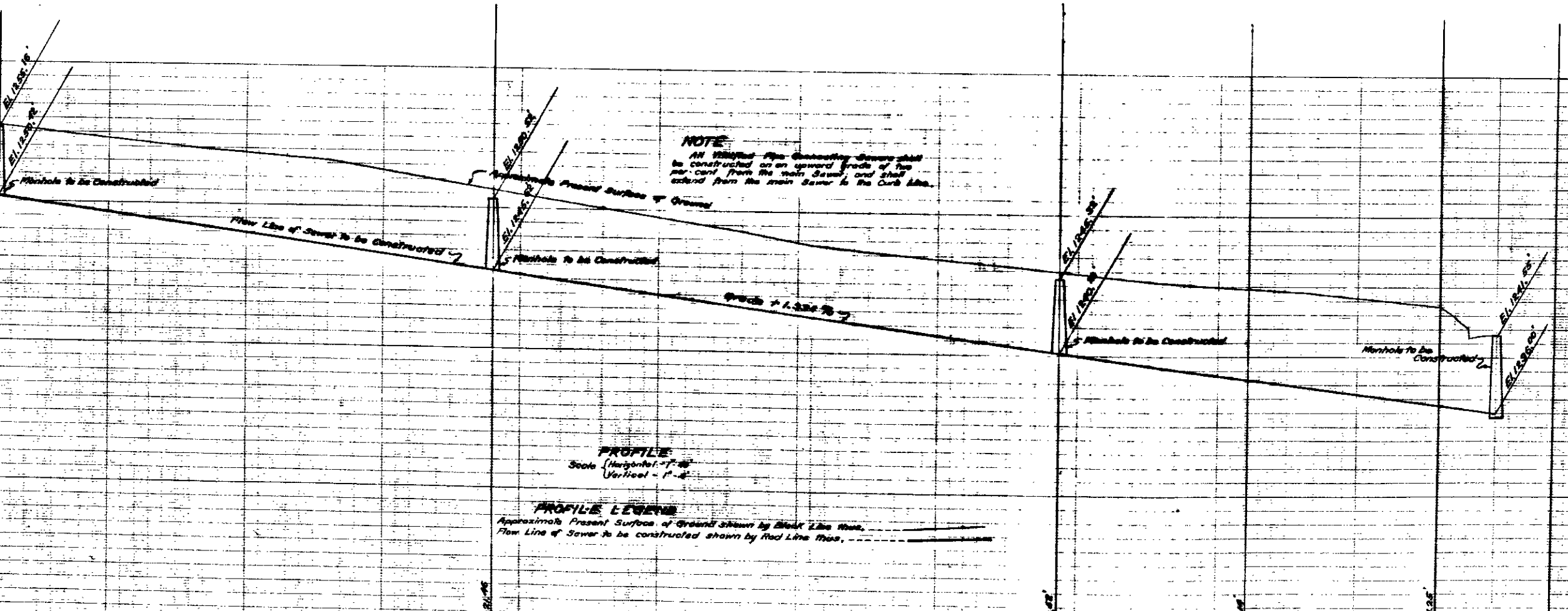
PLAN ADOPTED - April 3, 1950 -



LEGEND

" or in means inch or inches
 ' or ft. means foot or feet
 #1 means number
 C. means Center Line
 El. means Elevation
 8" Vitrified Pipe Sewer to be Constructed, shown thus
 6" x 4" Pipes with 4" Connecting Sewers to be constructed, shown thus
 Manholes to be constructed, shown thus
 Existing Sewer main now in, shown thus.

St. means Street
 Ave. means Avenue
 Blvd. means Boulevard.



NOTE
 All Vitrified Pipe Connecting Sewers shall be constructed on an upward grade of two per cent from the main Sewer, and shall extend from the main Sewer to the Curb Line.

PROFILE
 Scale Horizontal - 1" = 40'
 Vertical - 1" = 2'

PROFILE LEGEND
 Approximate Present Surface of Ground shown by Black Line thus
 Flow Line of Sewer to be constructed shown by Red Line thus

SEWER DETAIL

Lineal Ft. of 8" Vitrified Pipe Sewer to be Constructed	422
Lineal Ft. of 6" x 4" Vitrified Pipe Sewer to be Constructed	25
No. of 6" x 4" Pipes with 4" Connecting Sewers to be Constructed	4
No. of Manholes to be Constructed	7

TITLE TO STREET

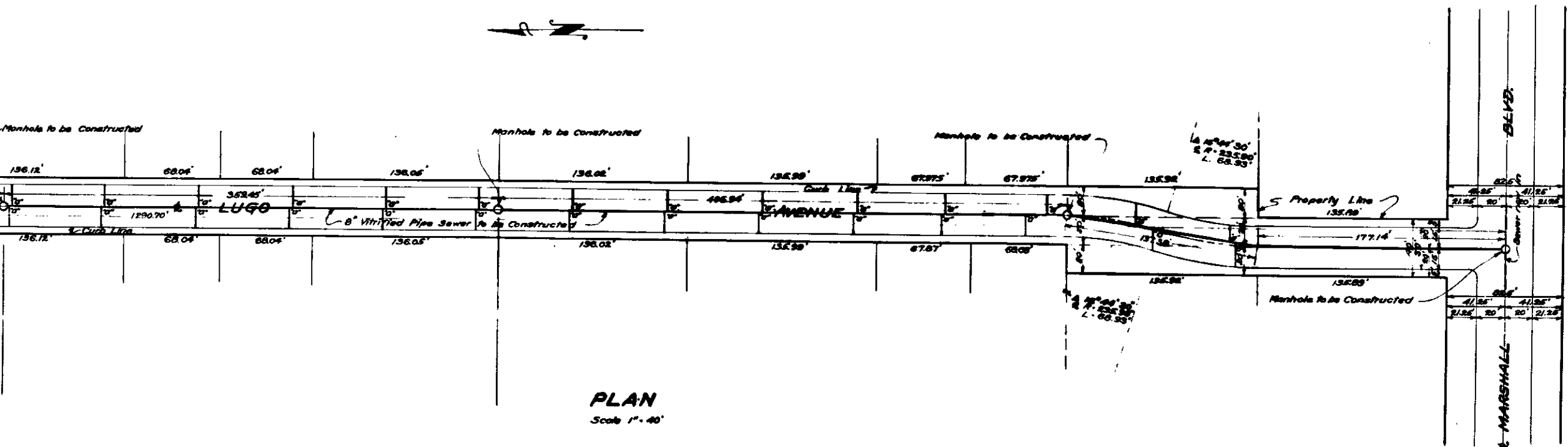
LUGO AVENUE is dedicated by deeds recorded in

Book	Page
20-78	408-409
20-82	401-402
20-83	403-404-405
20-85	416-417
20-86	78-79
20-87	3-4
20-88	31
25-91	378

Official Records of San Bernardino County, California.

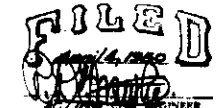
GRADE ORDINANCE
 Grade of LUGO AVENUE was established by Resolution No 1891 of the City of San Bernardino, California.

DATUM
 All Elevations shown in Red are in feet and are above a plane which is 1045.85 feet below the Bench Mark established by Ordinance 383 of the City of San Bernardino, California.



SHEET NO 1
PLAN NO 1891
LUGO AVENUE SEWER
 Between
MARSHALL BOULEVARD AND 34TH STREET
 in the
CITY OF SAN BERNARDINO
CALIFORNIA
 MARCH 1950
 R. D. FORSYTHE
 Acting City Engineer

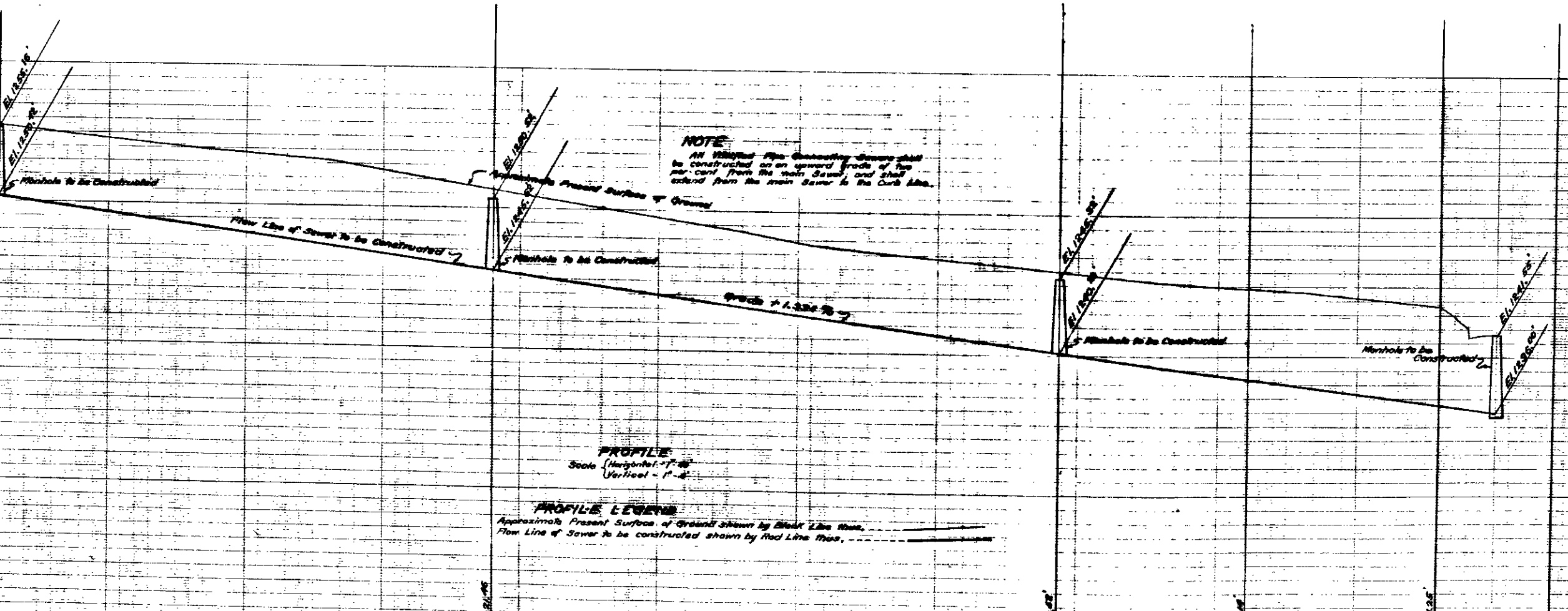
PLAN ADOPTED - April 3, 1950 -



LEGEND

" or in means inch or inches
 ' or ft. means foot or feet
 #1 means number
 C. means Center Line
 El. means Elevation
 8" Vitrified Pipe Sewer to be Constructed, shown thus
 8" x 4" Vitrified Pipe Sewer to be Constructed, shown thus
 Manholes to be constructed, shown thus
 Existing Sewer main now in, shown thus.

St. means Street
 Ave. means Avenue
 Blvd. means Boulevard.



SEWER DETAIL

Lineal Ft. of 8" Vitrified Pipe Sewer to be Constructed	422
Lineal Ft. of 8" x 4" Vitrified Pipe Sewer to be Constructed	25
No. of 8" x 4" Vitrified Pipe Sewers to be Constructed	4
No. of Manholes to be Constructed	7

TITLE TO STREET

LUGO AVENUE is dedicated by deeds recorded in

Book	Page
20-78	408-409
20-82	401-402
20-83	403-404-405
20-85	416-417
20-86	78-79
20-87	3-4
20-88	31
25-91	378

Official Records of San Bernardino County, California.

GRADE ORDINANCE

Grade of LUGO AVENUE was established by Resolution No 1891 of the City of San Bernardino, California.

DATUM

All Elevations shown in feet are in feet and are above a plane which is 1045.85 feet below the Bench Mark established by Ordinance 383 of the City of San Bernardino, California.